

# MO SCHOLARS



## MISSOURI'S BRAND NEW EMPOWERMENT SCHOLARSHIP ACCOUNT PROGRAM



# \$6,375

## ANNUAL SCHOLARSHIP AWARDED TO EVERY QUALIFIED STUDENT

## WHAT IS THE MISSOURI SCHOLARS PROGRAM?

MOScholars is a tax-credit program providing financial support to families to offset certain qualified educational expenses, including tuition. Christian School District is already approved for the program through Children's Tuition Fund.

## WHO QUALIFIES?

Families living in St. Louis or St. Charles Counties qualify based on either household income OR having an approved IEP/ISP for their child.

### MAXIMUM HOUSEHOLD INCOME

(BASED ON INCOME STANDARDS FOR FREE/REDUCED LUNCH)

Family Size	100%
2	\$33,874
3	\$42,606
4	\$51,338
5	\$60,070
6	\$68,802
7	\$77,534
8	\$86,266

If student qualifies based on income, they must have also attended public school for at least one semester within the last 12 months, or be entering K or 1st grade. Priority will be given to families with annual income at or below the 100% income standard.

### IEP/ISP QUALIFICATIONS

An Individualized Education Plan (IEP) must be developed under the federal Individuals with Disabilities Education Act (IDEA), which means:

- The IEP is defined in 20 U.S.C. §1414(d)(1)(A)(i); or
- An Individual Service Plan (ISP) that is developed in cooperation with a local educational agency under the IDEA.

Any IEP or ISP must be dated within 36 months of the date of program application.

## WHY SHOULD FAMILIES PARTICIPATE?

Beginning the first year of your successful application, parents will receive this scholarship to help pay tuition every year through 12th grade for your child's education. This scholarship does not need to be repaid, and carries no tax liability for you. So perhaps the question is, why wouldn't you participate?

## HOW DO FAMILIES PARTICIPATE?

Families apply with [Children's Tuition Fund](#) (CTF). *CHRISTIAN* does not issue the scholarships. The application for 2023-24 will be available soon. CTF will inform families if third-party income verification is needed (similar to the process families use to apply for tuition assistance at CSD). CTF will notify families of any award.

## WHO IS CHILDREN'S TUITION FUND?

We are excited to partner with [Children's Tuition Fund](#) (CTF), a ministry of [ACSI](#) that advocates for school choice through scholarship tax-credit programs across the country. CTF is committed to providing Christian families the opportunity to choose an education that best fits the needs of their children.

## HOW DOES THIS IMPACT TUITION ASSISTANCE?

MOScholar's empowerment scholarships cover a substantial portion of a family's tuition, thus replacing financial support provided by the school. However, some families receiving these scholarships may need additional support through the CSD tuition assistance program. CSD will endeavor to help these families within the guidelines established annually by the school.

## WHAT'S THE CATCH?

The program has some ongoing requirements, although these are minimal. Families must agree to the program requirements such as reporting demographic data and completing an annual satisfaction survey. Students must complete standardized tests each year, something already incorporated at CSD.

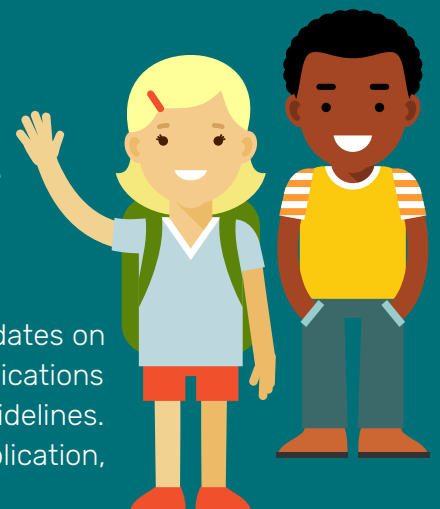
## HOW IS THE PROGRAM FUNDED?

Individuals and corporations that pay Missouri state income tax can contribute to an authorized organization like CTF. Contributors receive a 100% tax-credit of up to half their state income tax liability. For 2022, \$25 million in MOScholars tax credits are available.

## READY TO TAKE THE NEXT STEP?

We are excited by the potential for MOScholars to help thousands of Missouri students, including many CSD families. Our hope is that as more families participate in the program, MOScholars will expand to allow more students to benefit.

We encourage you to connect with CTF through [here](#). They will have updates on when 2023-24 applications are open. CTF reviews scholarship applications based on the order they were received and in compliance with state guidelines. If it is determined that you would qualify based on your preliminary application, CTF will reach out with the next steps.



If you have more questions about the program, please email Mr. Ibbetson at [jibbetson@cspd12.com](mailto:jibbetson@cspd12.com).